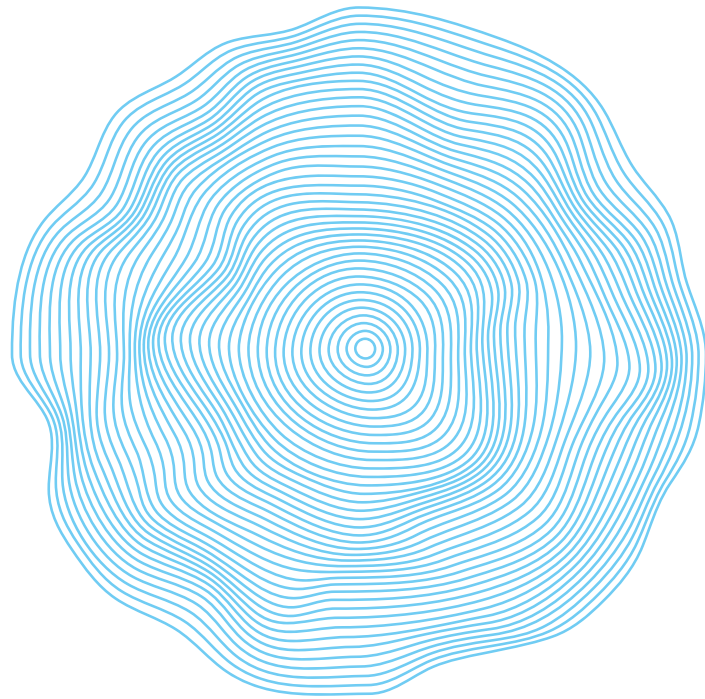




SOBHA HARTLAND



Where Escaping is staying

Enjoy the perks of living by a crystal lagoon in central Dubai



Why make Sobha Hartland your home?

Views of Ras Al Khor Wildlife Sanctuary and the crystal lagoon.

Located in the epicentre of the city with major landmarks just minutes away.

2 International schools within the Sobha Hartland Community.

3 lush green parks connected by a central pathway for all residents.

Central Park

Acres of green canopies surround you in this exclusive park in Hartland Estates.

Greens East Park

A park designed for outdoor recreation with an amphitheater, kids' play area, rock-climbing wall and a lot more.

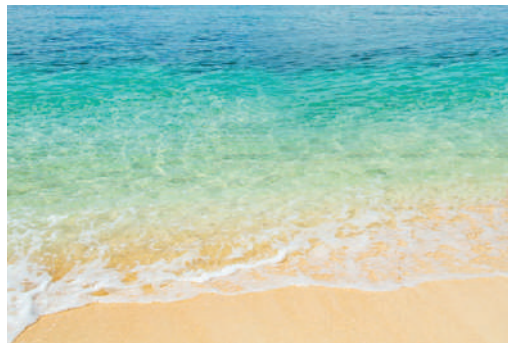
Greens West Park

Bringing the forest to your doorstep in this park that is a doorway to a world far away, yet in the centre of the city.

PRE-LAUNCHING TOWER C AT

THE

CREST



Caribbean-style crystal lagoon facing residences
now have a name

THE
CREST



Residential towers with inter-linked Sky Gardens
now have a name

THE
CREST



Experiential community living
now has a name

THE
CREST

What does The Crest
at Sobha Hartland have
to offer



- Located on the banks of a pristine **CRYSTAL LAGOON**.
3 inter-connected expansive towers.
- A host of **AMENITIES** spread across the podium level and the landscaped terraces; curated just for you.
- Residential living space that provides endless moments of **EXPERIENCES**.
- Inter-linked **SKYWALK** that brings all 3 towers of The Crest together.



THE
CREST

A lifestyle worthy of your every day,
with no reason to step out.

*Images used for representative purpose only



INDOOR
AMENITIES

THE
CREST



Health Club with
changing rooms

Multipurpose Hall



Spin Class Studio



Pilates Studio



Yoga Studio



OUTDOOR
AMENITIES

THE
CREST



Swimming Pool

Kids Play Area



Pentanque
Boules Lawn



Barbeque Area



Outdoor Gym
Terrace

Tai Che Terrace



Inter-linked Sky Gardens
at different levels



Landscaped Terraces at
different levels with a
host of amenities

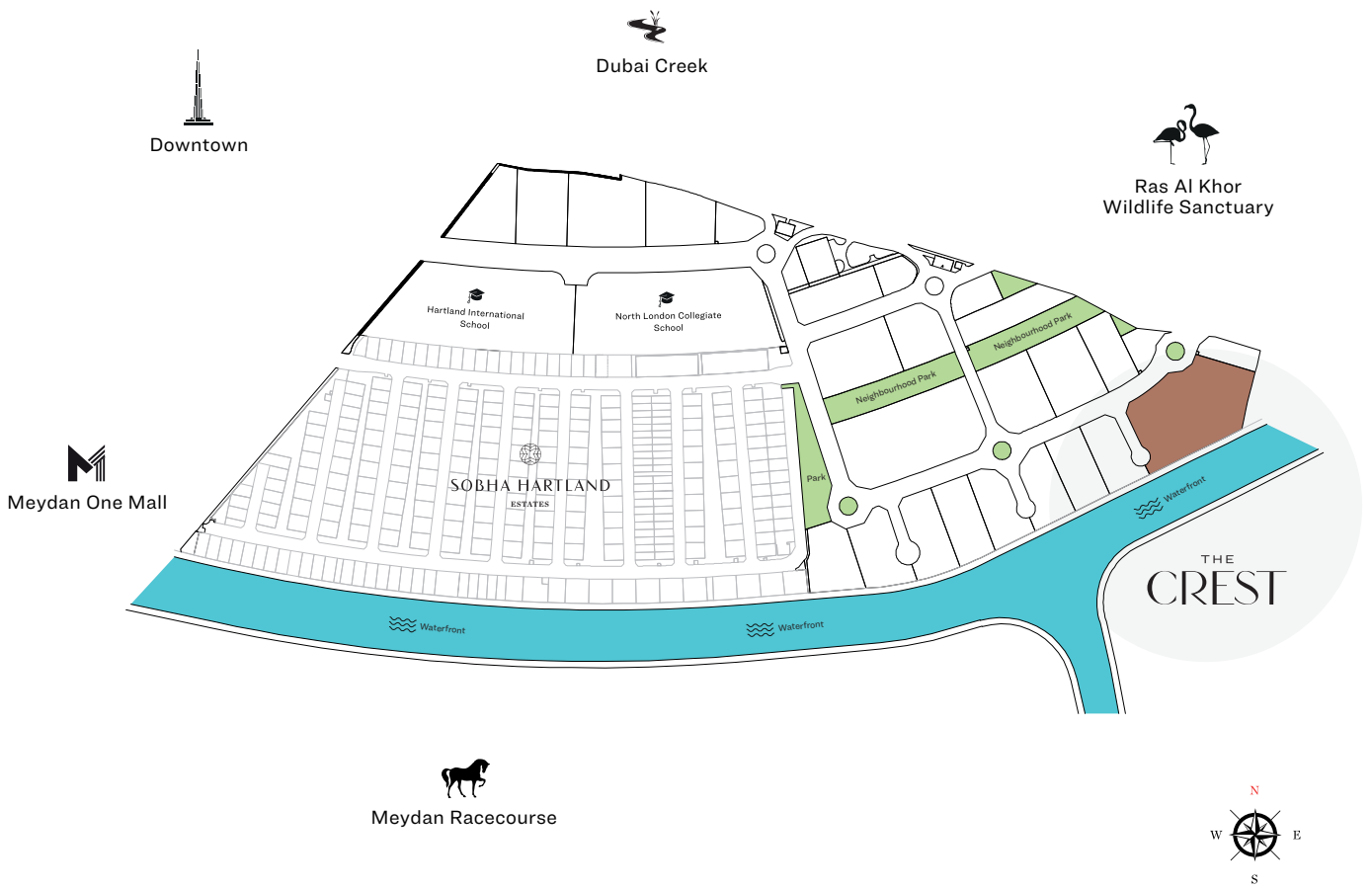
MASTER PLAN

FLOOR PLANS

RESIDENTIAL UNIT PLANS

THE
CREST

LOCATION IN THE MASTER PLAN



APARTMENT FEATURES



Landmark views



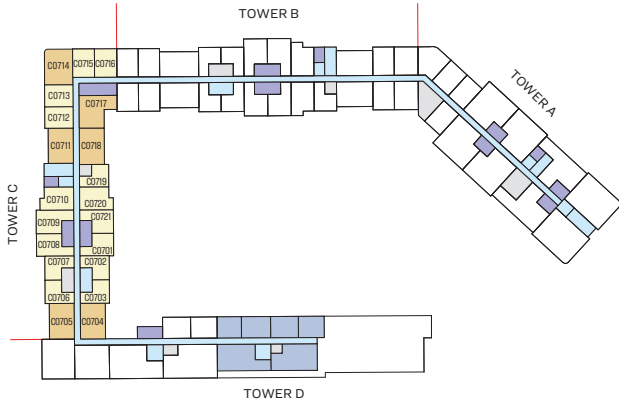
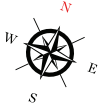
Covered car parking



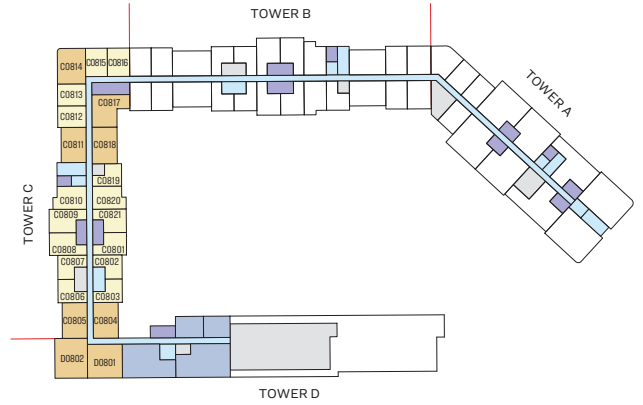
Fully fitted kitchens



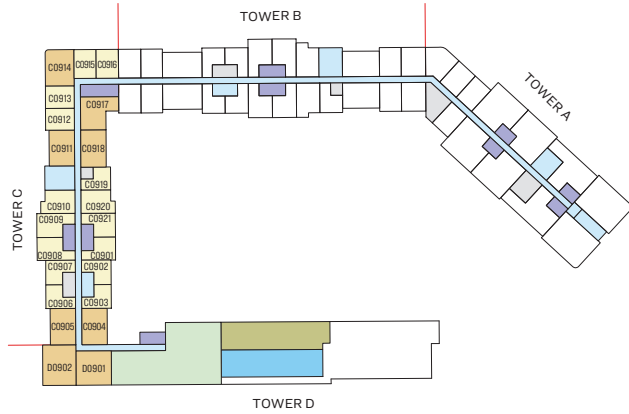
Bedroom wardrobe in all units



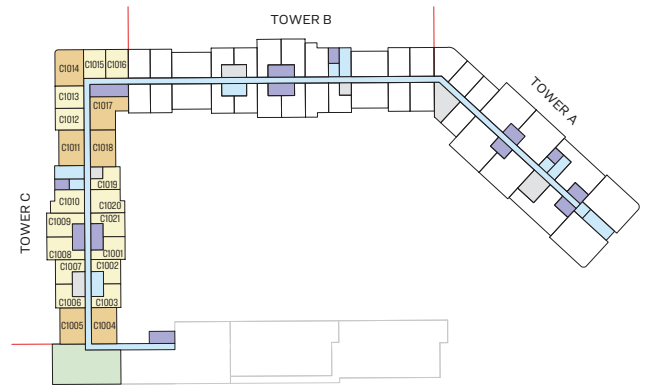
LEVEL-07



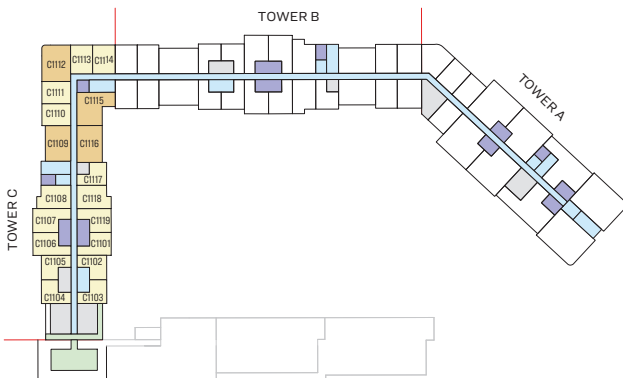
LEVEL-08



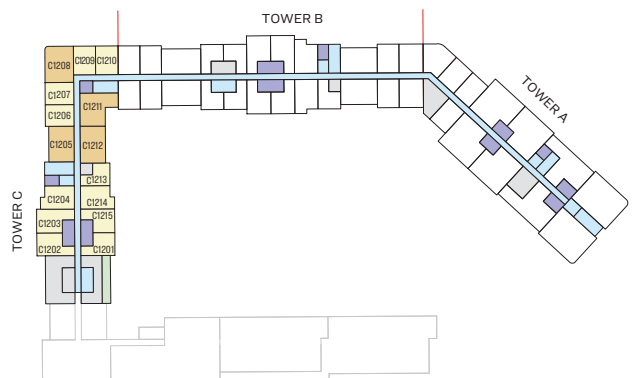
LEVEL-09



LEVEL 10

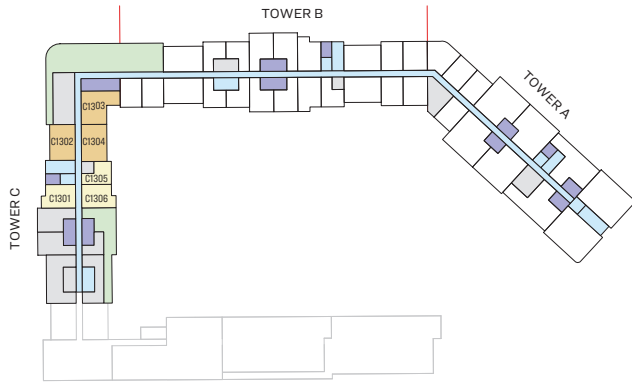
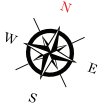


LEVEL 11

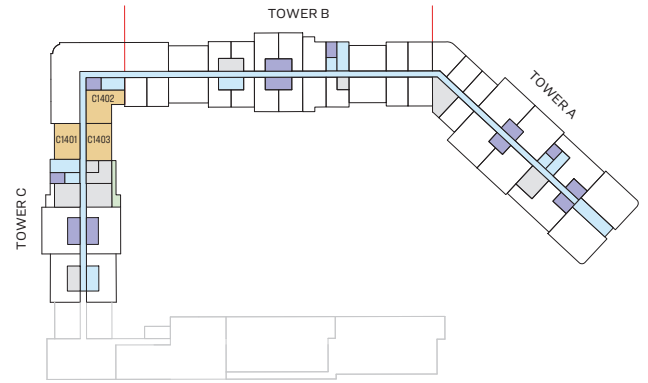


LEVEL 12

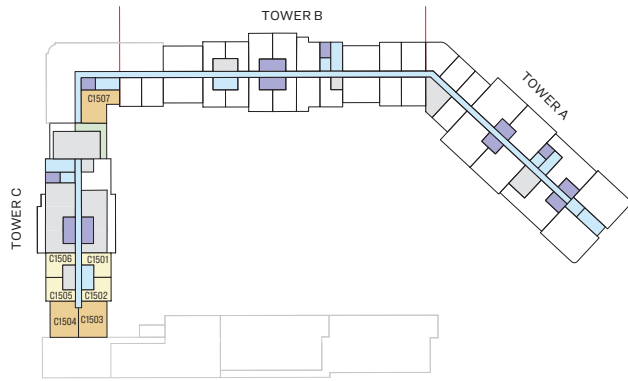
- | | | |
|--|--|---|
| 1 BED UNIT | SERVICES | SWIMMING POOL |
| 2 BED UNIT | LIFT | SWIMMING POOL DECK |
| 3 BED UNIT | AMENITIES | |
| LOBBIES, CORRIDORS & STAIRS | LANDSCAPE | |



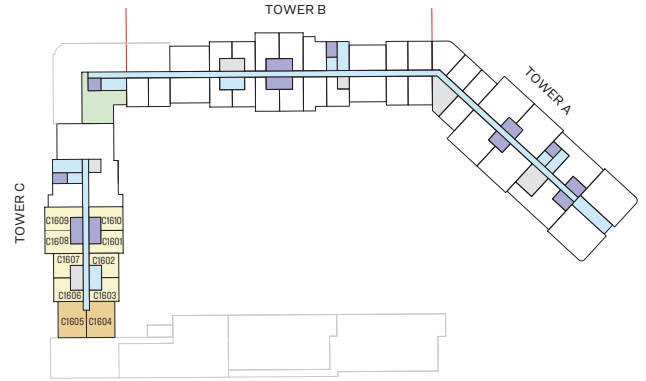
LEVEL 13



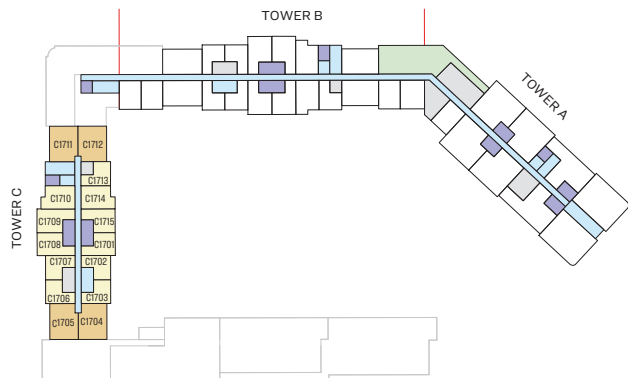
LEVEL 14



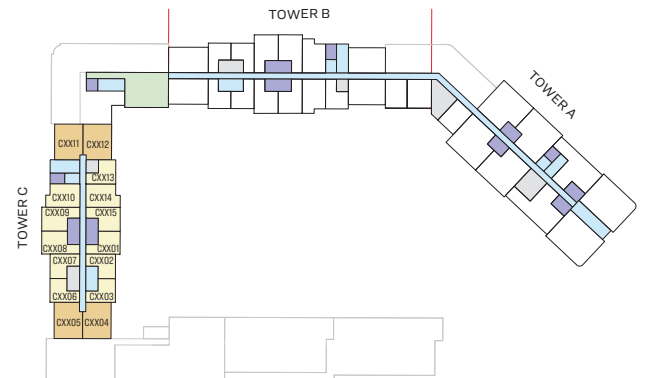
LEVEL 15



LEVEL 16



LEVEL 17



LEVEL 18 - LEVEL 33

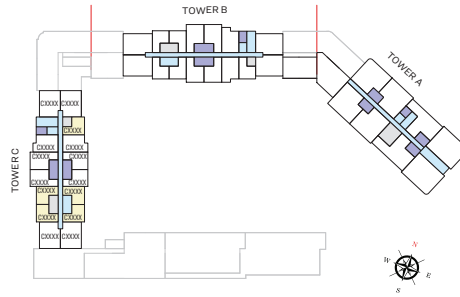
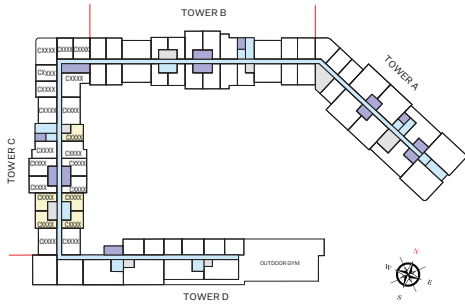
 1 BED UNIT	 SERVICES
 2 BED UNIT	 LIFT
 3 BED UNIT	 AMENITIES
 LOBBIES, CORRIDORS & STAIRS	 LANDSCAPE

1 BEDROOM APARTMENT

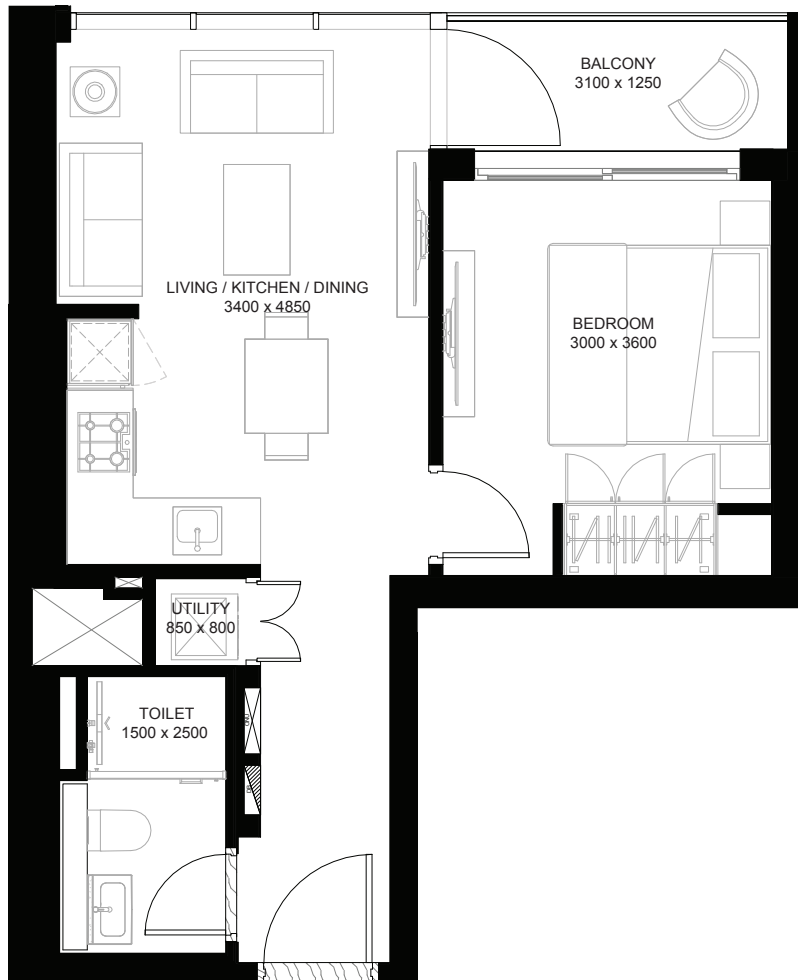
TYPE B (with balcony)

TOTAL SALEABLE AREA

SIZE RANGE = 509.46 SQ.FT. - 518.07 SQ.FT.



UNIT



List of unit numbers with this unit plan:

VIEWS

Amenities

C0702, C0703*, C0719*, C0802, C0803*, C0819*, C0902, C0903*, C0919*, C1002, C1003*, C1019*, C1102, C1103*, C1117*, C1213*, C1305*

Hartland, Waterfront

C0706*, C0707*, C0806*, C0807*, C0906*, C0907*, C1006*, C1007*, C1104*, C1105*, C1505*, C1506*, C1606*, C1607*, C1706*, C1707*, C1806*, C1807*, C1906*, C1907*, C2006*, C2007*, C2106*, C2107*, C2206*, C2207*, C2306*, C2307*, C2406*, C2407*, C2506*, C2507*

Downtown, BK, Hartland, Waterfront

C2606*, C2607*, C2706*, C2707*, C2806*, C2807*, C2906*, C2907*, C3006*, C3007*, C3106*, C3107*, C3206*, C3207*, C3306*, C3307*

Amenities, Waterfront

C1501, C1502*, C1602, C1603*, C1702, C1703*, C1713*, C1802, C1803*, C1813*, C1902, C1903*, C1913*, C2002, C2003*, C2013*, C2102, C2103*, C2113*, C2202, C2203*, C2213*, C2302, C2303*, C2313*, C2402, C2403*, C2413*, C2502, C2503*, C2513*, C2602, C2603*, C2613*, C2702, C2703*, C2713*, C2802, C2803*, C2813*, C2902, C2903*, C2913*, C3002, C3003*, C3013*, C3102, C3103*, C3113*, C3202, C3203*, C3213*, C3302, C3303*, C3313*

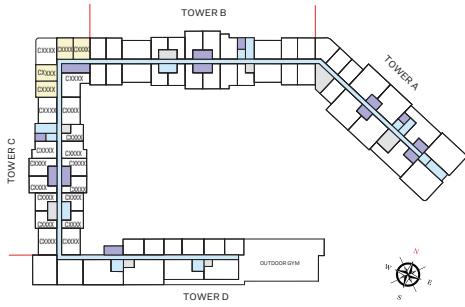
* These apartments have mirrored units plans of the above

1 BEDROOM APARTMENT

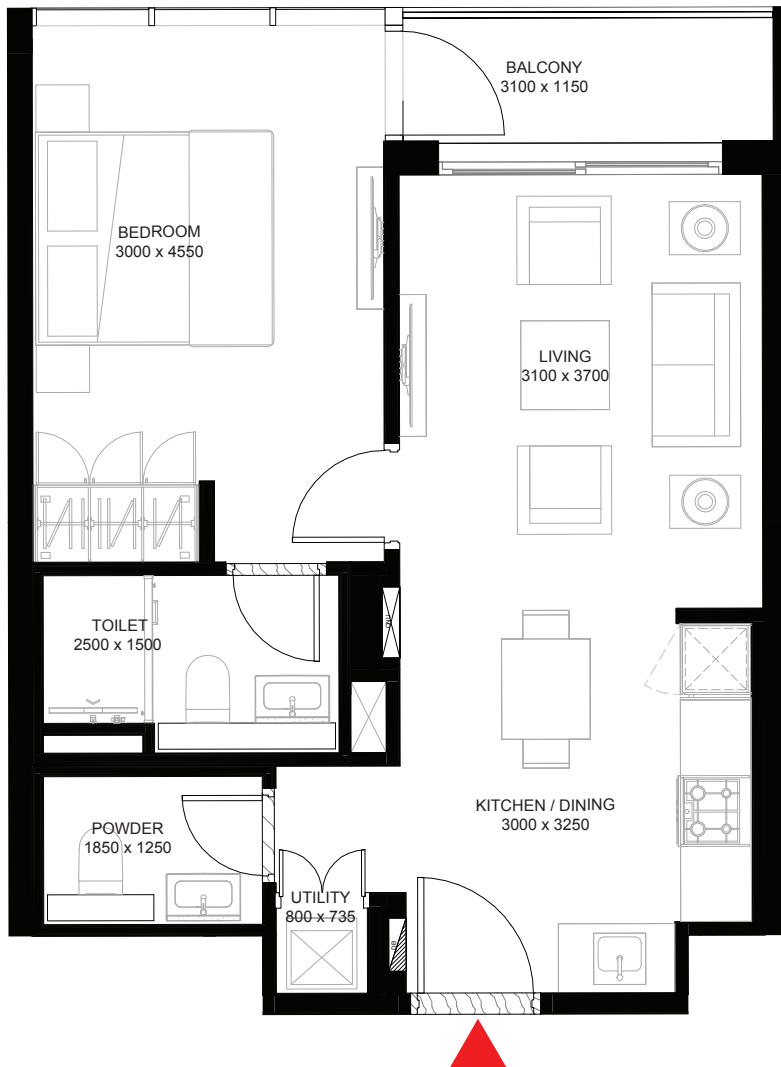
TYPE A (with powder room + balcony)

TOTAL SALEABLE AREA

SIZE RANGE = 565.00 SQ.FT. - 572.53 SQ.FT.



UNIT



List of unit numbers with this unit plan:

VIEWS

Hartland

C0712*, C0713*, C0715, C0716*, C0812*, C0813*, C0815, C0816*, C0912*, C0913*, C0915, C0916*, C1012*, C1013*, C1015, C1016*, C1110*, C1111*, C1113, C1114*, C1206*, C1207*, C1209, C1210*

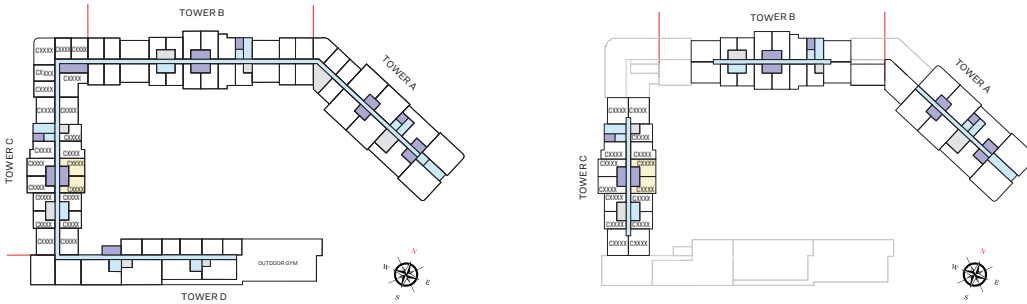
* These apartments have mirrored units plans of the above

1 BEDROOM APARTMENT

TYPE B (with powder room + balcony)

TOTAL SALEABLE AREA

SIZE RANGE = 586.09 SQ.FT. - 608.91 SQ.FT.



UNIT



List of unit numbers with this unit plan:

VIEWS

Amenities

C0701, C0721*, C0801, C0821*, C0901, C0921*, C1001, C1021*, C1101, C1119*, C1201, C1215*

Amenities, Waterfront

C1601, C1610*, C1701, C1715*, C1801, C1815*, C1901, C1915*, C2001, C2015*, C2101, C2115*, C2201, C2215*, C2301, C2315*, C2401, C2415*, C2501, C2515*, C2601, C2615*, C2701, C2715*, C2801, C2815*, C2901, C2915*, C3001, C3015*, C3101, C3115*, C3201, C3215*, C3301, C3315*

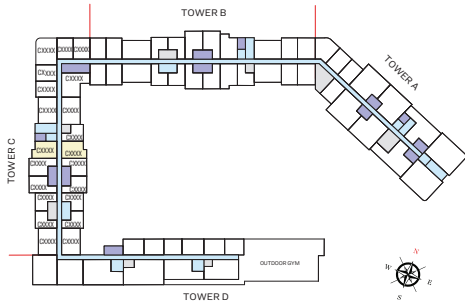
* These apartments have mirrored units plans of the above

1 BEDROOM APARTMENT

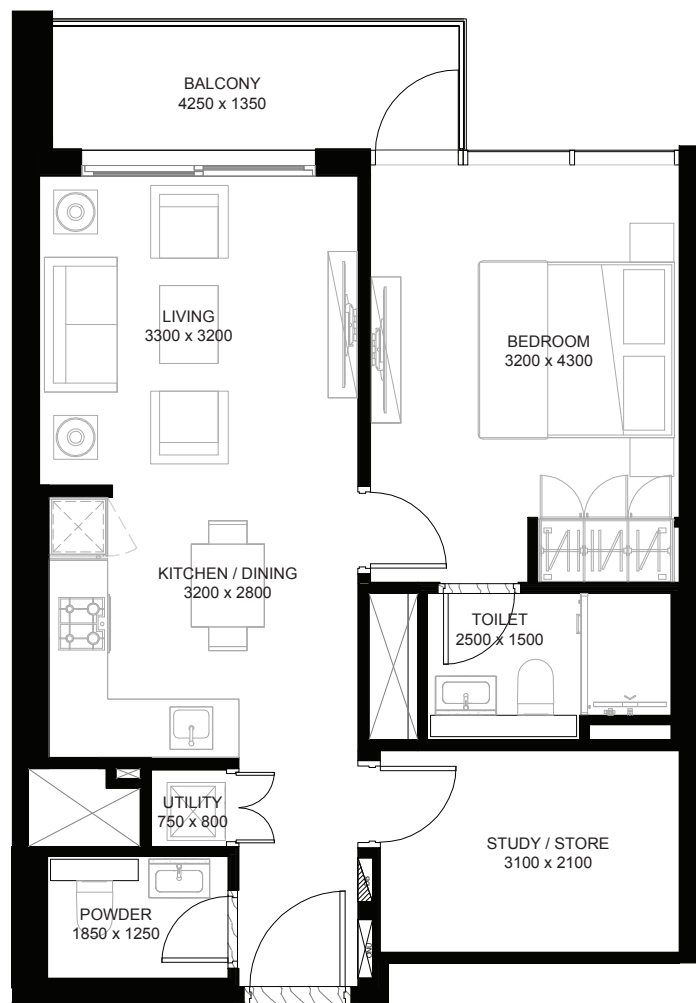
TYPE A (with study/store + balcony)

TOTAL SALEABLE AREA

SIZE RANGE = 673.61 SQ.FT. - 685.55 SQ.FT.



UNIT



List of unit numbers with this unit plan:

VIEWS

Downtown, Hartland

C1710, C1810, C1910, C2010, C2110, C2210, C2310

Downtown, BK, Hartland

C2410, C2510, C2610, C2710, C2810, C2910, C3010, C3110, C3210, C3310

Amenities, Waterfront

C1714*, C1814*, C1914*, C2014*, C2114*, C2214*, C2314*, C2414*, C2514*, C2614*, C2714*, C2814*, C2914*, C3014*, C3114*, C3214*, C3314*

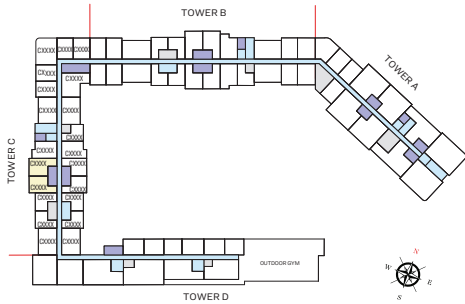
* These apartments have mirrored units plans of the above

1 BEDROOM APARTMENT

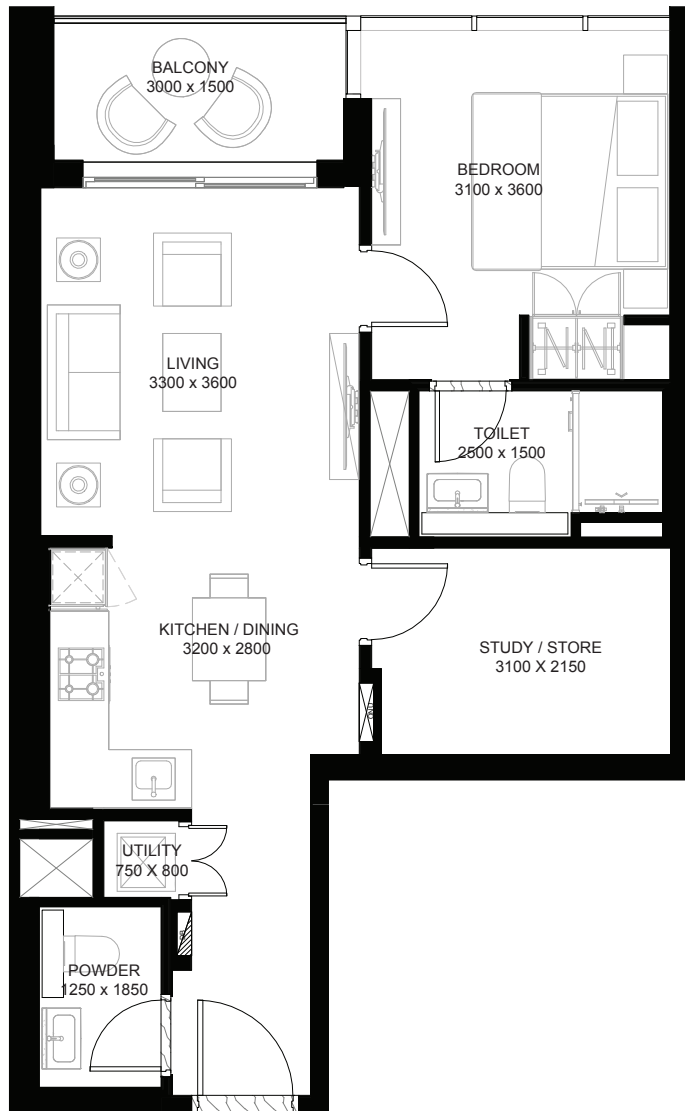
TYPE B (with study/store + balcony)

TOTAL SALEABLE AREA

SIZE RANGE = 677.70 SQ.FT. - 687.60 SQ.FT.



UNIT



List of unit numbers with this unit plan:

VIEWS

Hartland, Waterfront

C0708, C0709*, C0808, C0809*, C0908, C0909*, C1008, C1009*, C1106, C1107*, C1202, C1203*

Downtown, Hartland, Waterfront

C1608, C1609*, C1708, C1709*, C1808, C1809*, C1908, C1909*, C2008, C2009*, C2108, C2109*, C2208, C2209* C2308, C2309*

Downtown, BK, Hartland, Waterfront

C2408, C2409*, C2508, C2509*, C2608, C2609*, C2708, C2709*, C2808, C2809*, C2908, C2909*, C3008, C3009*, C3108, C3109*, C3208, C3209*, C3308, C3309*

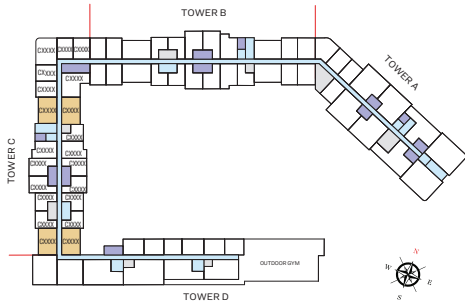
* These apartments have mirrored units plans of the above

2 BEDROOM APARTMENT

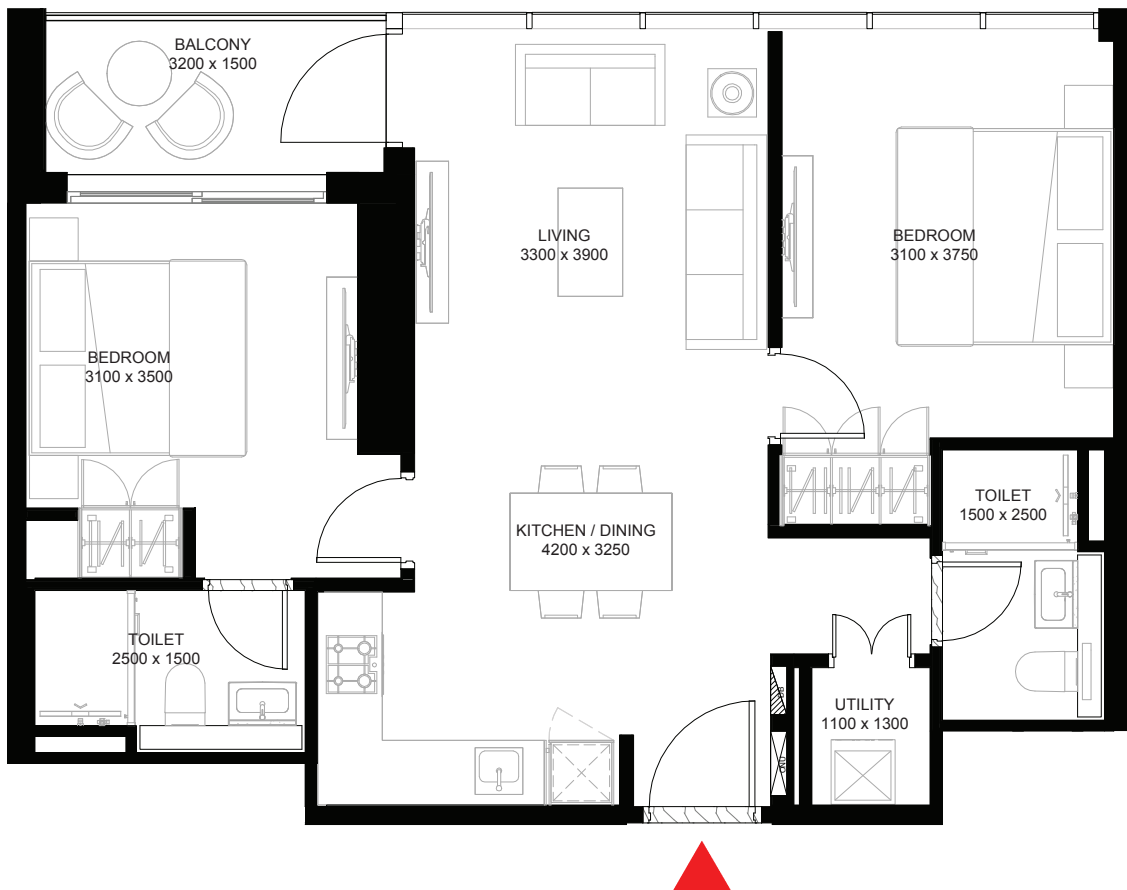
TYPE A (with balcony)

TOTAL SALEABLE AREA

SIZE RANGE = 790.39 SQ.FT. - 806.86 SQ.FT.



UNIT



List of unit numbers with this unit plan:

VIEWS

Amenities

C0704, C0718*, C0804, C0818*, C0904, C0918*, C1004, C1018*, C1116*, C1212*, C1304*

Hartland

C0711*, C0811*, C0911*, C1011*, C1109*, C1205*, C1302*, C1401

Hartland, Waterfront

C0705*, C0805*, C0905*, C1005*

Amentites, Waterfront

C1403*

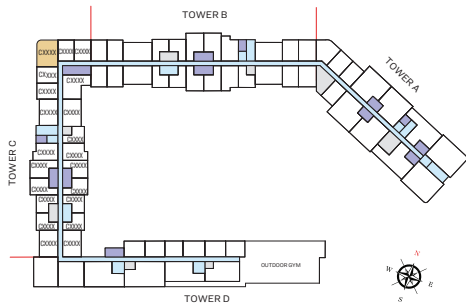
* These apartments have mirrored units plans of the above

2 BEDROOM APARTMENT

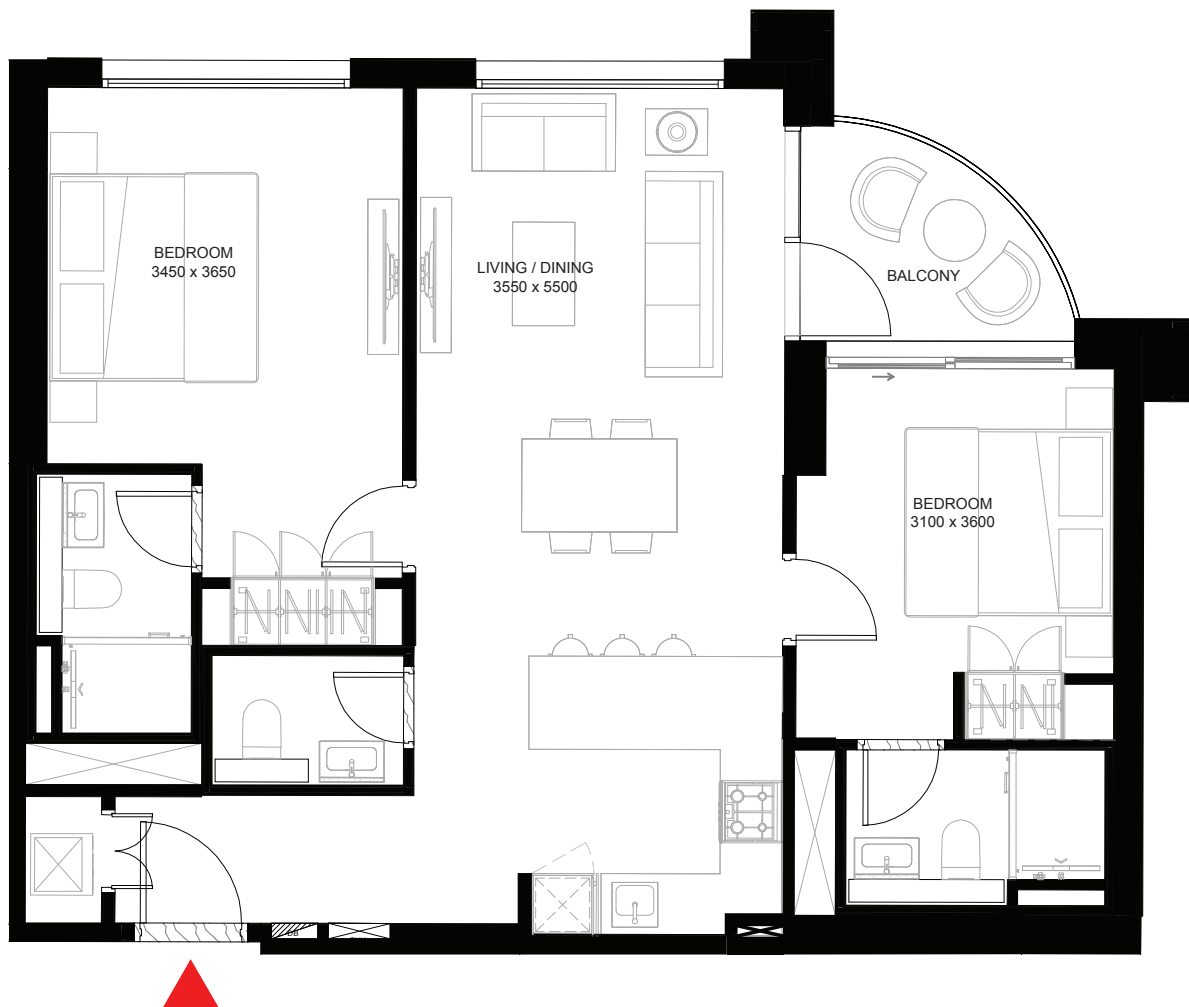
TYPE B (with balcony)

TOTAL SALEABLE AREA

SIZE = 896.96 SQ.FT.



UNIT



List of unit numbers with this unit plan:

VIEWS

Hartland

C0714, C0814, C0914, C1014, C1112, C1208

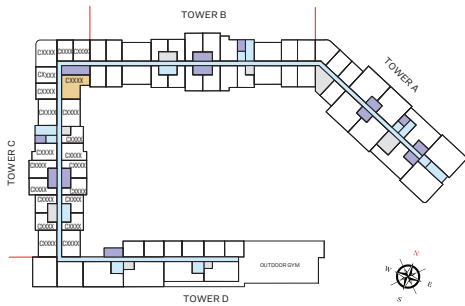
* These apartments have mirrored units plans of the above

2 BEDROOM APARTMENT

TYPE C (with balcony)

TOTAL SALEABLE AREA

SIZE RANGE = 913.53 SQ.FT. - 919.67 SQ.FT.



UNIT



List of unit numbers with this unit plan:

VIEWS

Amenities

C0717, C0817, C0917, C1017, C1115, C1211, C1303

Amentities, Waterfront

C1402, C1507

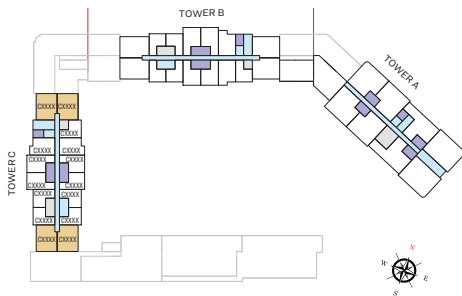
* These apartments have mirrored units plans of the above

2 BEDROOM APARTMENT

TYPE A (with study/store + balcony)

TOTAL SALEABLE AREA

SIZE RANGE = 1,047.97 SQ.FT. -1,058.09 SQ.FT.



UNIT



List of unit numbers with this unit plan:

VIEWS

Downtown, BK, Hartland

C2411*, C2511*, C2611*, C2711*, C2811*, C2911*, C3011*, C3111*, C3211*, C3311*

Downtown, BK, Hartland, Amenities, Waterfront

C2412*, C2512*, C2612*, C2712*, C2812*, C2912*, C3012*, C3112*, C3212*, C3312*

Downtown, Hartland

C1711*, C1811*, C1911*, C2011*, C2111*, C2211*, C2311*

Hartland, Waterfront

C1504*, C1605*, C1705*, C1805*, C1905*, C2005*, C2105*, C2205*, C2305*, C2405*, C2505*

Downtown, BK, Hartland, Waterfront

C2605*, C2705*, C2805*, C2905*, C3005*, C3105*, C3205*, C3305*

Downtown, Hartland, Amenities, Waterfront

C1812*, C1912*, C2012*, C2112*, C2212*, C2312*

Amentites, Waterfront

C1503, C1604, C1704, C1712*, C1804, C1904, C2004, C2104, C2204, C2304, C2404, C2504, C2604, C2704, C2804, C2904, C3004, C3104, C3204, C3304

* These apartments have mirrored units plans of the above

SOBHA
REALTY